

# LINCOLN

AT IPI CENTER



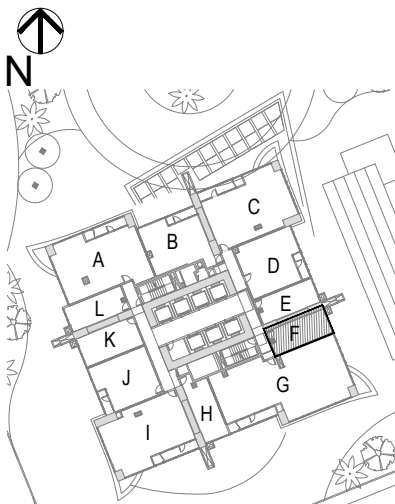
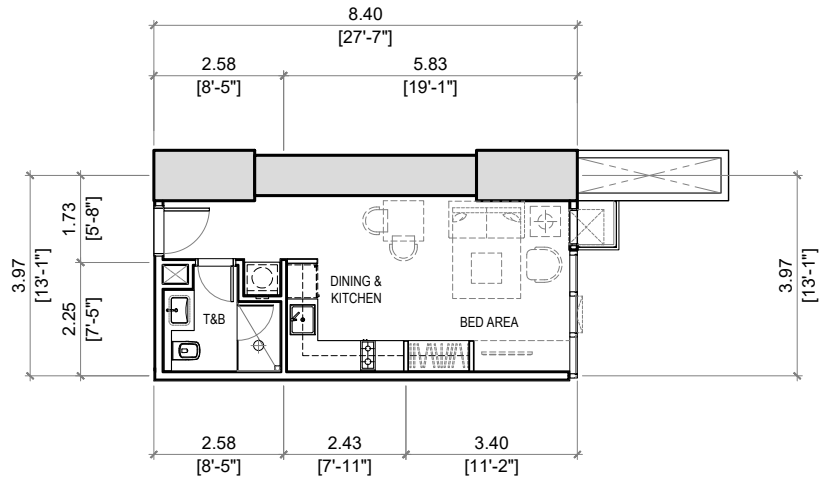
## TYPICAL FLOORS (3RD-49TH)

UNIT TYPE	UNIT SIZE (SQM)	NO. OF UNITS
		PER FLOOR
STUDIO	33 - 35	4
1BR	39 - 65	4
2BR	104	3
3BR	154	1

The above information and drawings are conceptual and subject to change without prior notice. The Developer reserves the right to make additions, deletions and modifications to the drawings as the Developer may deem appropriate or desirable. August 2023.

# LINCOLN

AT IPI CENTER



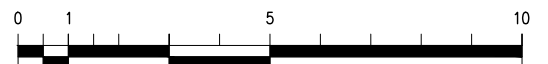
**AREAS:**

BED AREA	14 sm
DINING & KITCHEN	14 sm
T&B	5 sm

TOTAL : 33 sm

LEVEL : 2 - 49

UNIT TYPE : **UNIT F**  
STUDIO



# LINCOLN

AT IPI CENTER

Unit Number :	<b>LINC-43F</b>	
Turnover:	April 2029	
Tower:	Lincoln Tower	
Orientation:	North-East	
Area:	33 sq.m /355 sq. ft	
Unit Price with VAT with (1) Parking Slot	PHP	13,016,667
<i>Less: 3% Intro Discount</i>		<u>390,500</u>
<b>TOTAL CONTRACT PRICE</b>	<b>PHP</b>	<b>12,626,167</b>

**PAYMENT TERM: 10-30(66)-60**  
**Studio Unit**

**Monthly Amortization at 0% Interest**

Reservation Fee	PHP	100,000	To hold the Unit
10% Downpayment		1,162,617	Within 15 days from RF
<b>OPTION 1</b> (Straight Amortization)			
30% Monthly Amortization for 66 months		57,392	First monthly within 15 days from RF
<b>OPTION 2</b> (Amortization with Lumpsum every 12 months)			
15% Monthly Amortization for 66 months		28,696	First Monthly within 15 days from RF
15% Lumpsum on Month 12,24,36,48,60		378,785	every 12 months
60% Balance		<u>7,575,700</u>	April 2029
<b>Total Purchase Price</b>	<b>PHP</b>	<b>12,626,167</b>	

- \* Prepared on August 15, 2023
- \* RLC reserves the right to change above terms and prices without prior notice
- \* Other taxes and fees for the account of the Purchaser
- \* All checks payable to **ROCKWELL IPI DEVELOPMENT CORPORATION**