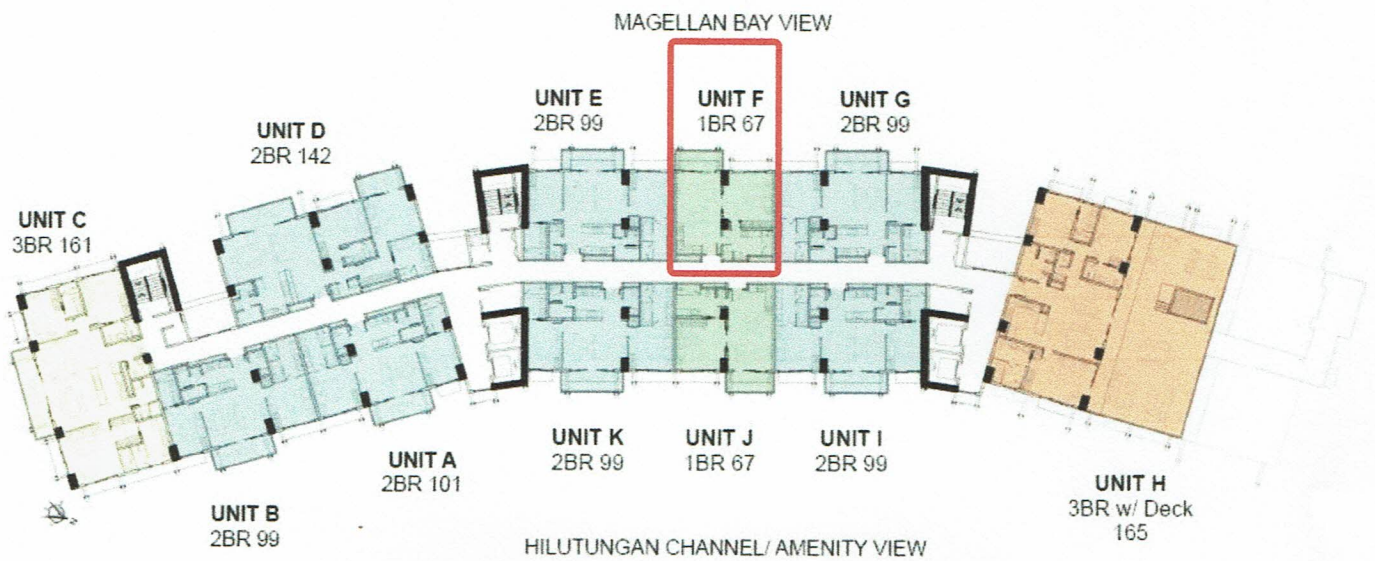


ARUGA

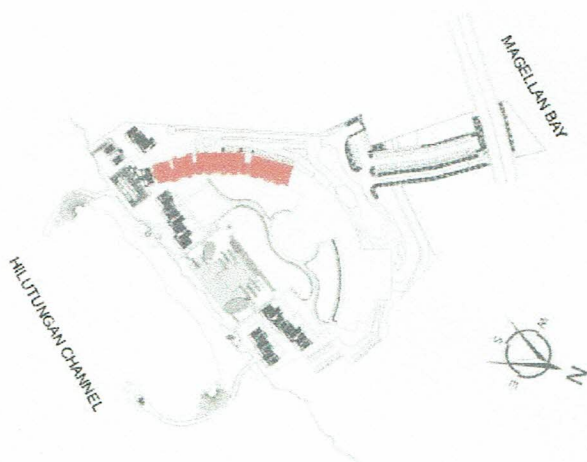
BY ROCKWELL

RESORT AND RESIDENCES

MACTAN - CEBU



TWENTIETH FLOOR PLAN



LEGEND:

- 1 Bedroom (67-69 sqm)
- 2 Bedroom (99-142 sqm)
- 2 Bedroom with Deck (132-134 sqm)
- 3 Bedroom (161-173 sqm)
- 3 Bedroom with Deck (165-204 sqm)
- 4 Bedroom with Deck (213-292 sqm)

KEY PLAN

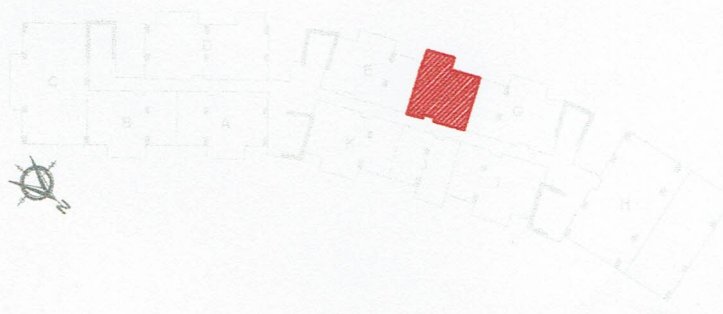
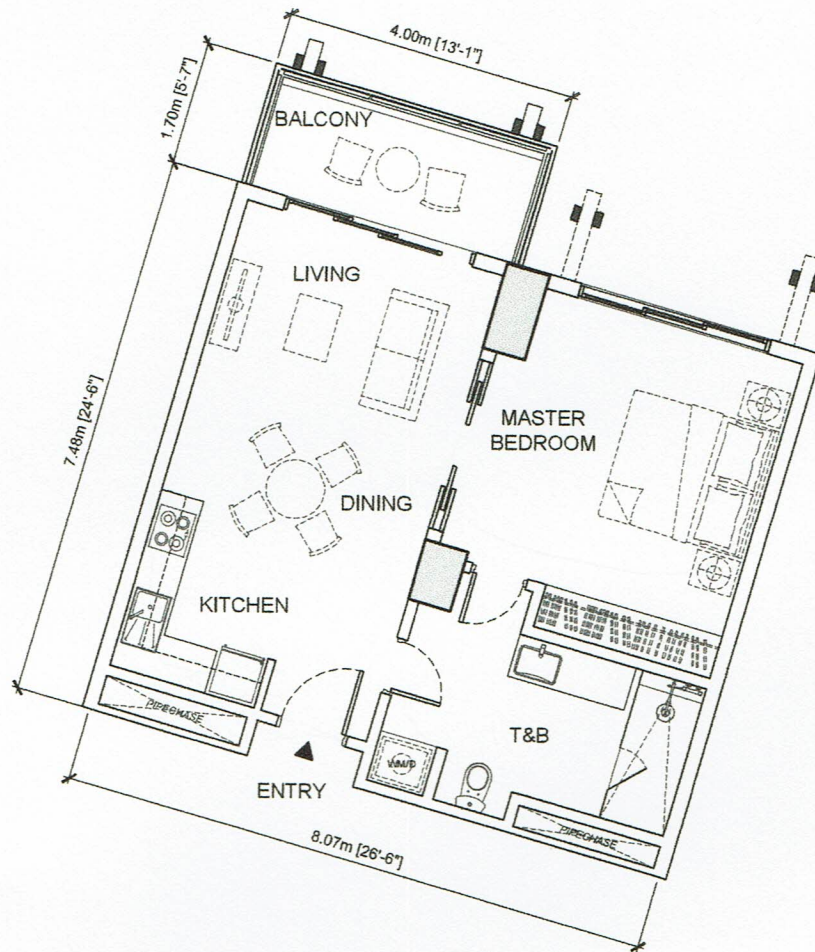
The above information and drawings are conceptual and subject to change without prior notice.
The Developer reserves the right to make additions, deletions, and modifications to the drawings as the Developer may deem appropriate or desirable. November 2018.

ARUGA

BY ROCKWELL

RESORT AND RESIDENCES

MACTAN - CEBU



KEYPLAN

AREA:

LIVING/DINING/KITCHEN	28 sm
MASTER BEDROOM	19 sm
T & B	13 sm
BALCONY	7 sm

TOTAL AREA : 67 sm

LEVEL : 20th

UNIT TYPE : **UNIT F**
1-BEDROOM



The above information and drawings are conceptual and subject to change without prior notice. The Developer reserves the right to make additions, deletions and modifications to the drawings as the Developer may deem appropriate or desirable. November 2018



Unit Number : **MACR-20F**
 Turnover: December 2023
 Tower: Tower 1
 Orientation: Southwest - Magellan Bay
 Area: 67sq.m / 721sq.ft

Unit Price with VAT	PHP	20,296,200
with (1) indoor parking slot		
Total Price	PHP	20,296,200
Total Contract Price	PHP	20,296,200
TOTAL CONTRACT PRICE	PHP	20,296,200

PAYMENT TERM (Standard Option 2): 10-30-30-30 OPTION
1 Bedroom Unit

Cash Payment

Total Price	PHP	20,296,200	
6% Cash Discount		1,217,772	
Total Contract Price	PHP	19,078,428	
Reservation Fee		100,000	To hold the unit
Cash Payment		18,978,428	After 15 - 30 days

Monthly Amortization at 0% Interest

Reservation Fee	PHP	100,000	To hold the unit
10% Downpayment		1,929,620	Within 15 days from RF
30% Monthly Amortization for 44 months		138,383	First monthly within 15 days from DP
60% Straight Amortization for 44 months		276,766	
30% Lumpsum on Month 9, 18, 27, 36		1,522,215	Every 9 months
30% Upon Turnover		6,088,860	Upon turnover
Total Purchase Price	PHP	20,296,200	

* Payment Term valid until January 15, 2020

* **Inclusive of one (1) indoor Parking Slot**

* **Inclusive of Split type air conditioning units, SMEG Kitchen Appliances, Water heater/s and Washer/Dryer**

* RLC reserves the right to change above terms and prices without prior notice

* Documentary stamp tax, value added tax, transfer tax, registration fee, assurance fund and other fees, taxes and expenses for the transfer of the title to the unit in the name of the Purchaser shall be exclusively borne by the Purchaser.

* All checks payable to ROCKWELL LAND CORPORATION

* Amortization and Lumpsum are subject to change monthly



Unit Number :	MACR-20F	
Turnover:	July 2023	
Tower:	Tower 1	
Orientation:	Southwest - Magellan Bay	
Area:	67sq.m / 721sq.ft	
Unit Price with VAT	PHP	20,296,200
Total Price		20,296,200
(1) indoor Parking Slot	PHP	
Total Contract Price	PHP	20,296,200
TOTAL CONTRACT PRICE	PHP	20,296,200

PAYMENT TERM (Standard Option 2): 10-15-15-60 OPTION
1 Bedroom Unit

Cash Payment

Total Price	PHP	20,296,200	
6% Cash Discount		1,217,772	
Total Contract Price	PHP	19,078,428	
Reservation Fee		100,000	To hold the unit
Cash Payment		18,978,428	After 15 - 30 days

Monthly Amortization at 0% Interest

Reservation Fee	PHP	100,000	To hold the unit
10% Downpayment		1,929,620	Within 15 days from RF
15% Monthly Amortization for 44 months		69,192	First monthly within 15 days from DP
*30% Straight Amortization for 44 months		138,383	
15% Lumpsum on Month 9, 18, 27, 36		761,108	Every 9 months
60% Upon Turnover		12,177,720	Upon turnover
Total Purchase Price	PHP	20,296,200	

* Payment Term valid until January 20, 2020

*** Inclusive of one (1) indoor Parking Slot**

*** Inclusive of Split type air conditioning units, SMEG Kitchen Appliances, Water heater/s and Washer/Dryer**

* RLC reserves the right to change above terms and prices without prior notice

* Documentary stamp tax, value added tax, transfer tax, registration fee, assurance fund and other fees, taxes and expenses for the transfer of the title to the unit in the name of the Purchaser shall be exclusively borne by the Purchaser.

* All checks payable to ROCKWELL LAND CORPORATION

* Amortization and Lumpsum are subject to change monthly